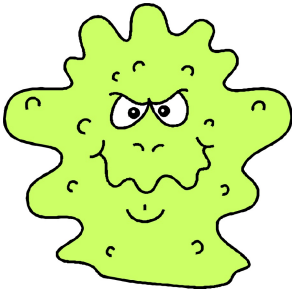


Part 2: INFECTION CONTROL

2.1 INFECTION CONTROL MEASURES



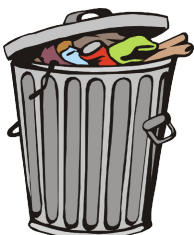
The subject of infection control is of paramount importance within the Care Home environment. Our clients are frail, elderly people and are particularly vulnerable to infections. We therefore need to ensure that our environment is kept as clean / hygienic and as free from infections as possible. This can only be achieved through the use of strict **Infection Control Policies and Procedures** which we have developed and compliance with which is mandatory when working in the Home.

Infection Control Policies and Procedures focus on many aspects of the Home's environment and working activities, and you will receive appropriate training in those relevant to your particular job. Among the key Policies and Procedures are the following:

- ✘ Staff Health Screening and Surveillance.
- ✘ Action when a staff member contracts a Notifiable Disease.
- ✘ Action when a resident contracts a Notifiable Disease - this may involve isolation.
- ✘ Action when a family member or visitor contracts a Notifiable Disease.
- ✘ Action when a staff member suffers a needle-stick injury.
- ✘ Effective cleaning of the Home and disposal of waste, including "sharps".
- ✘ Laundering of bed linen and residents' personal garments.
- ✘ Handling a deceased resident, particularly when infected.
- ✘ Proper use and handling of protective clothing.
- ✘ Control of pets in the Home.
- ✘ Pest control.
- ✘ Effective Food Hygiene Policies.

2.2 CLEANING & DISPOSAL OF WASTE

There is a formal system for cleaning the environment of the Home. Special techniques are employed for the kitchen and food handling areas, bathrooms and toilets and general living areas such as the lounge, dining room and residents' rooms.



Waste materials are disposed of according to a strict classification system. Waste is classified as domestic (household) rubbish, clinical (or bio-hazardous) waste, and "sharps" (used needles, scalpel blades etc), and appropriate disposal techniques are used.

Cleaning and waste disposal procedures are clearly documented.